



November 5, 2018

Dear Downtown Business and Property Owners,

The City of Spokane is fortunate to experience each and every season. In winter, that means we must make preparations to manage snow and ice on our streets and sidewalks. This letter is intended to keep you informed and get you ready for winter!

Property owners and residents are responsible for maintaining a clear pedestrian pathway on the sidewalk adjacent to their properties at all times. The goal is to create a pedestrian path that is accessible to and safe for all. When clearing your sidewalk, ask yourself whether a wheelchair could pass or a child holding the hand of her parent.

Please be aware that during certain snow event conditions, notice will be given and downtown parking will be prohibited between midnight and 6 a.m. to allow City crews to clear snow from parking bays and streets in the downtown core. In these times, there will be no on-street parking, **even for residential parking permit holders and for those individuals with handicap placards**. On the reverse of this letter is a map that details parking areas that the City has made available for these groups to use during these snow event circumstances. Parking in these areas will be free between 7 p.m. and 6 a.m. After that, the areas will revert to normal use.



When parking restrictions are activated, the information will be provided on the City's social media pages (@spokanecity on Facebook and Twitter) and on the City's snow response plan page on the web: <https://my.spokanecity.org/streets/maintenance/snow-removal/>. The information will be shared with local media and the Downtown Spokane Partnership. Citizens also can call 3-1-1 for information.

General information about downtown parking can be found here: <https://my.spokanecity.org/parking/> Detailed information about the City's snow response plan, including a plow progress map activated during full-City plow efforts, can be found here: <https://my.spokanecity.org/streets/maintenance/snow-removal/>

If you have additional questions or concerns, please call 3-1-1!

Best wishes for a safe winter season!

# Snow Event Parking



Off Street Parking:  
Lot 6

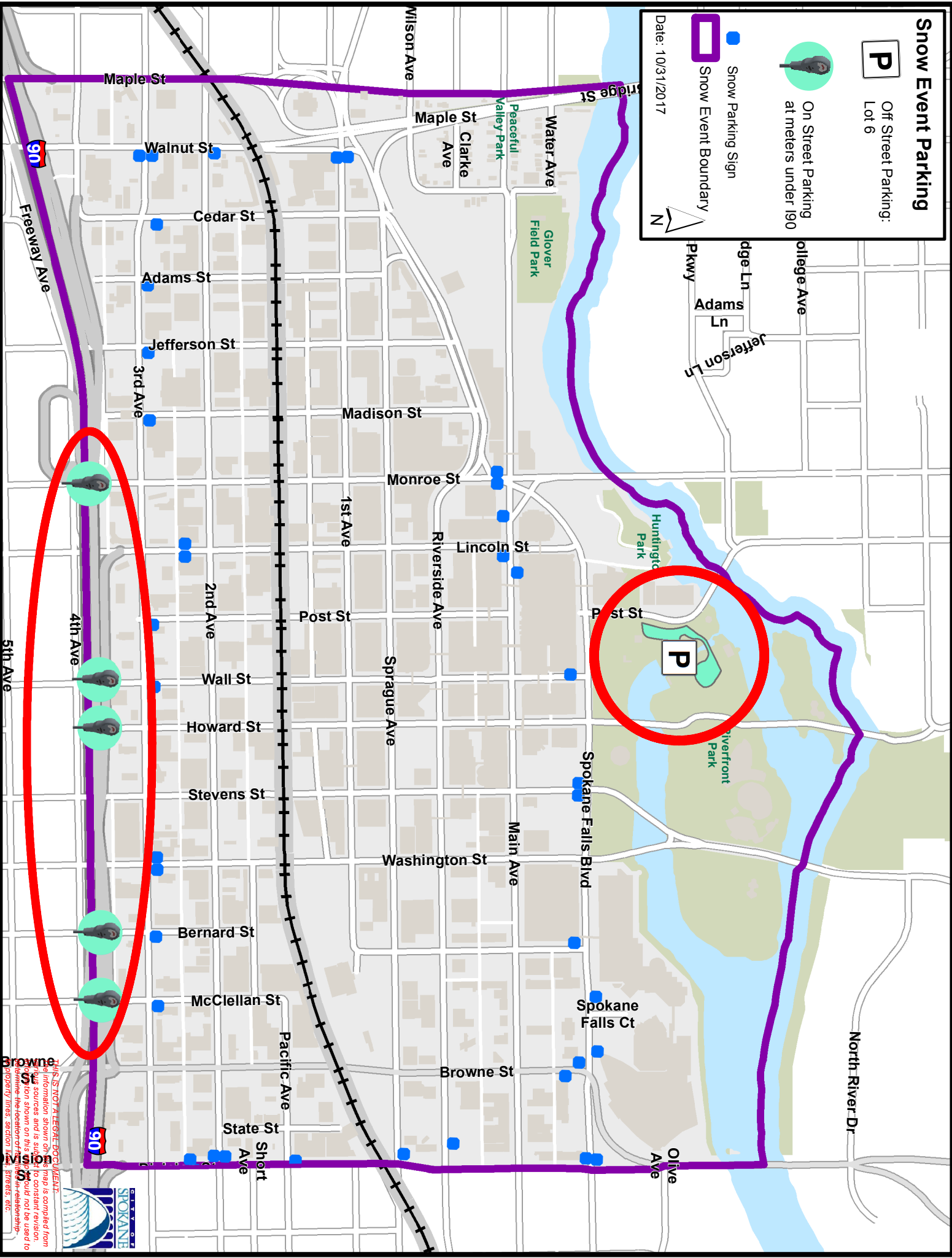


On Street Parking  
at meters under 190

Snow Parking Sign

Snow Event Boundary

Date: 10/31/2017



THIS IS NOT A LEGAL DOCUMENT.  
Information shown on this map is compiled from various sources and is subject to constant revision. No warranty is made by the City of Spokane as to the accuracy of the information shown on this map. The City of Spokane is not responsible for any errors or omissions that may appear hereon. The City of Spokane is not responsible for any damage to property, injury, or loss of life, property, or other interests, arising from the use of this map.

