



Historic Steam Plant / Seehorn Lang Building

159 S. Lincoln Street, Spokane, WA

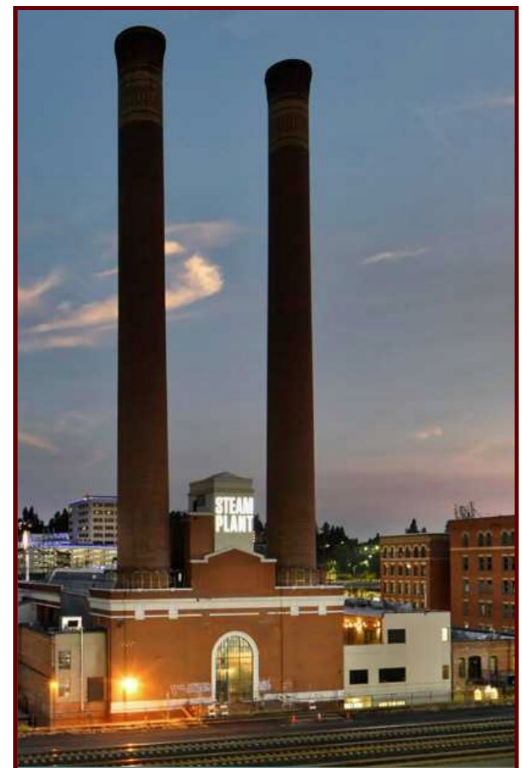
Highlights:

- ◆ Historic Spokane landmark in the heart of Downtown
- ◆ Iconic twin smokestacks tower 225 feet high
- ◆ Unique mix of restaurant, brewery, event space, retail and office
- ◆ 31,935 +/- sq. ft. parking lot adjacent to building
- ◆ Zoned Downtown General (DTG)
- ◆ Large daytime population

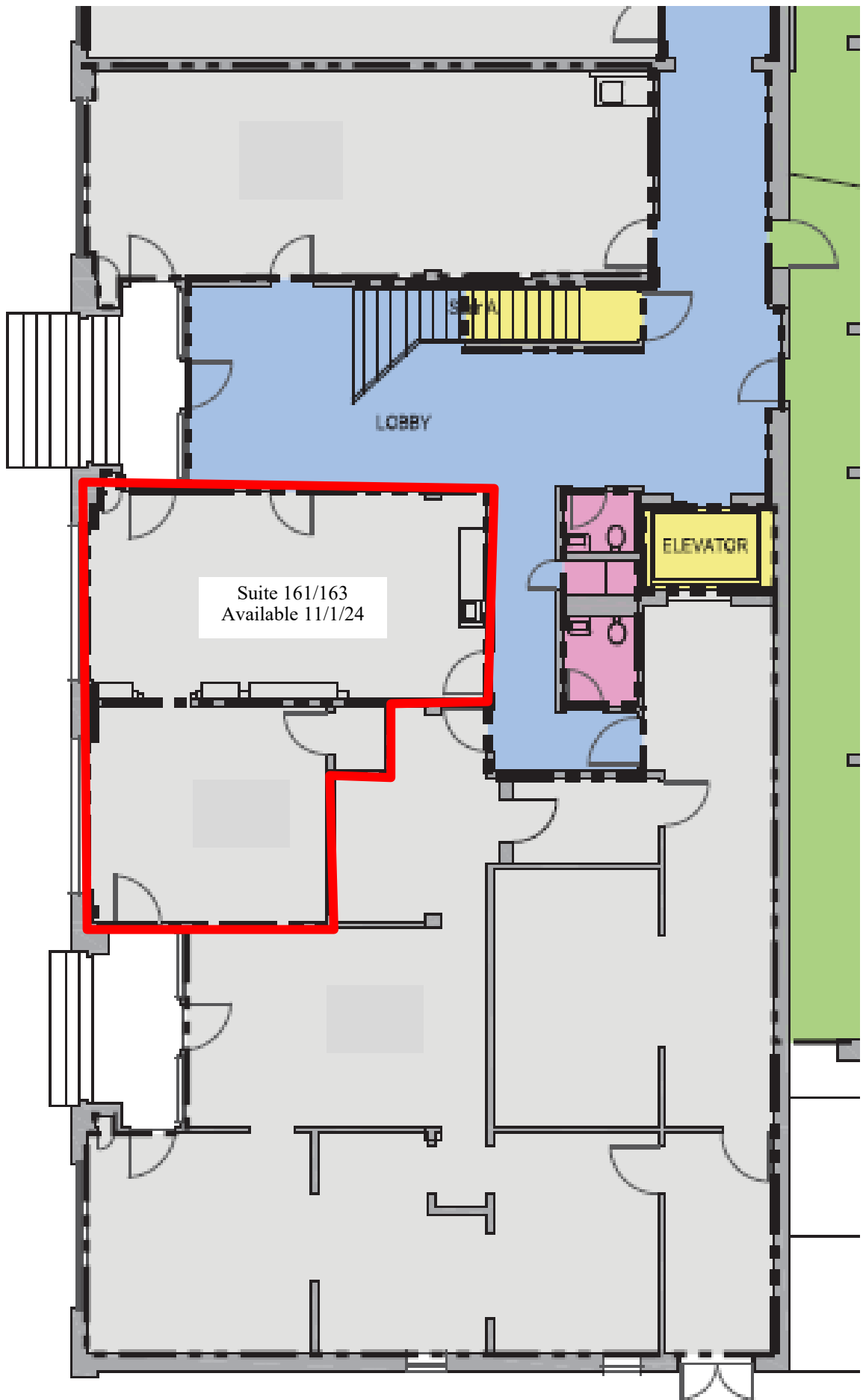
Available For Lease:

Suite 161 - 670 +/- Sq. Ft.

Suite 211 - 2,679 +/- Sq. Ft.



GVD COMMERCIAL PROPERTIES, INC.
KRISTIE JONES (509) 534-5805

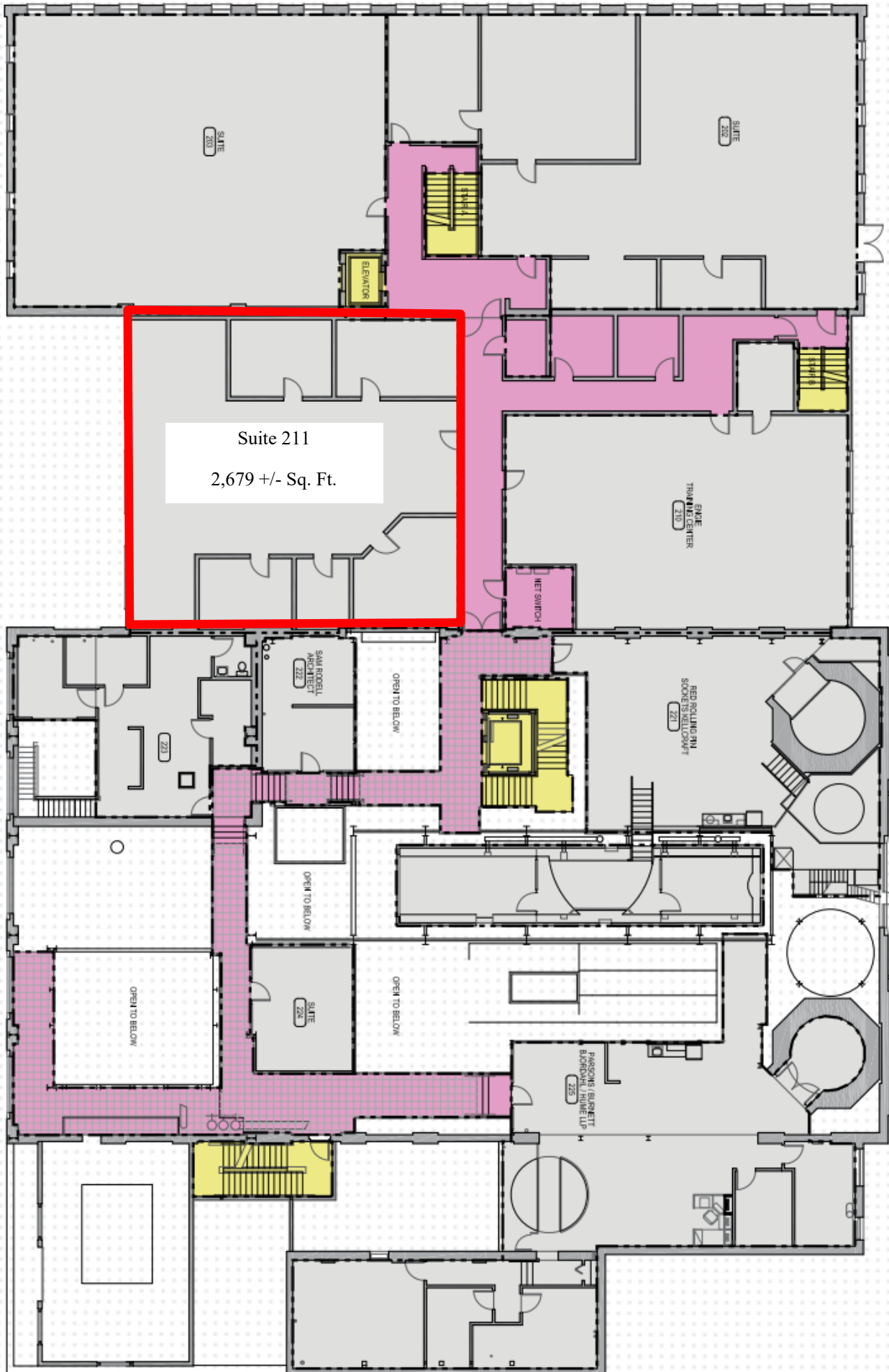


Suite 161/163
Available 11/1/24

LOBBY

ELEVATOR

STAIR A



Suite 211
2,679 +/- Sq. Ft.

SUITE 200

SUITE 202

ELEVATOR

SPACE TRAINING CENTER 210

NET SWITCH

SAUL ROBBEL ARCHITECT 227

OPEN TO BELOW

RED ROLLING RIN SCORES BELLROOM 221

223

OPEN TO BELOW

OPEN TO BELOW

SUITE 224

OPEN TO BELOW

PARKING GARAGE BARNETT BARNETT PARTNERS LLP 225

