

# Downtown Spokane Office Space for Lease Zoned CBD



View Office Space Downtown Spokane. For lease 3000sf to 6000sf of the top two floors of the 1889 Building overlooking the park, downtown Spokane. Located on the corner of North Stevens and Main Street. Plenty of parking and walk right to the building on the skywalks from parking garage. There is nothing like working from a historical piece of art like this. Your clients will be impressed and your employees will take pride in working here. offered at \$20sf per year, gross modified lease.



Restaurants and banks on this block on ground floor. From this location you can walk all over downtown Spokane in the heated Skyway system.

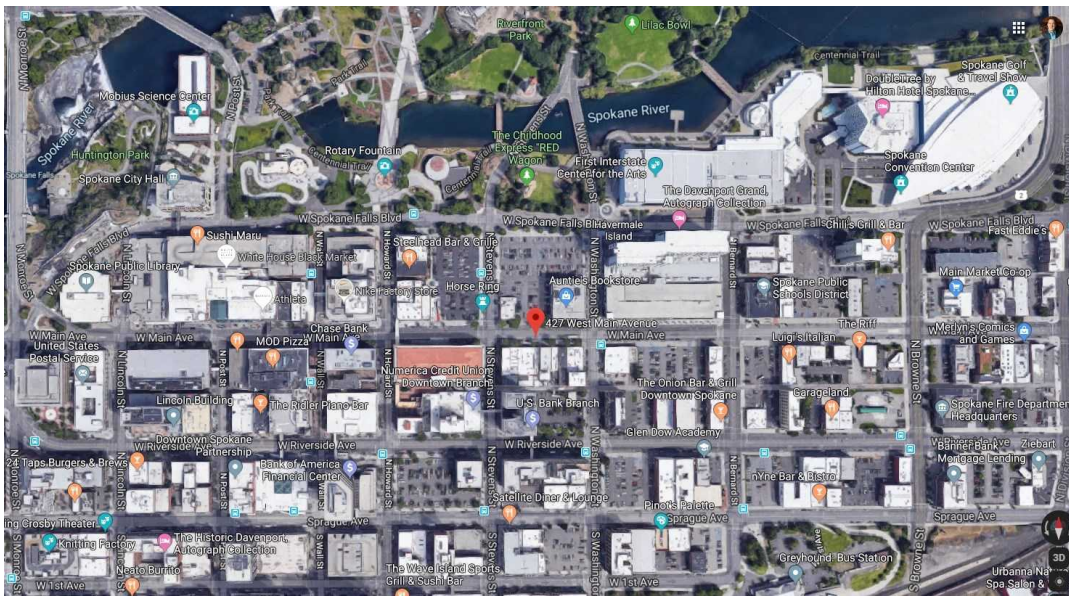


**For Lease  
Information  
Call:**

**Roger Wilson  
509-728-0654**

**Designated Broker  
Wilson Real Estate  
Management  
222 S 1st st  
Yakima Wa**

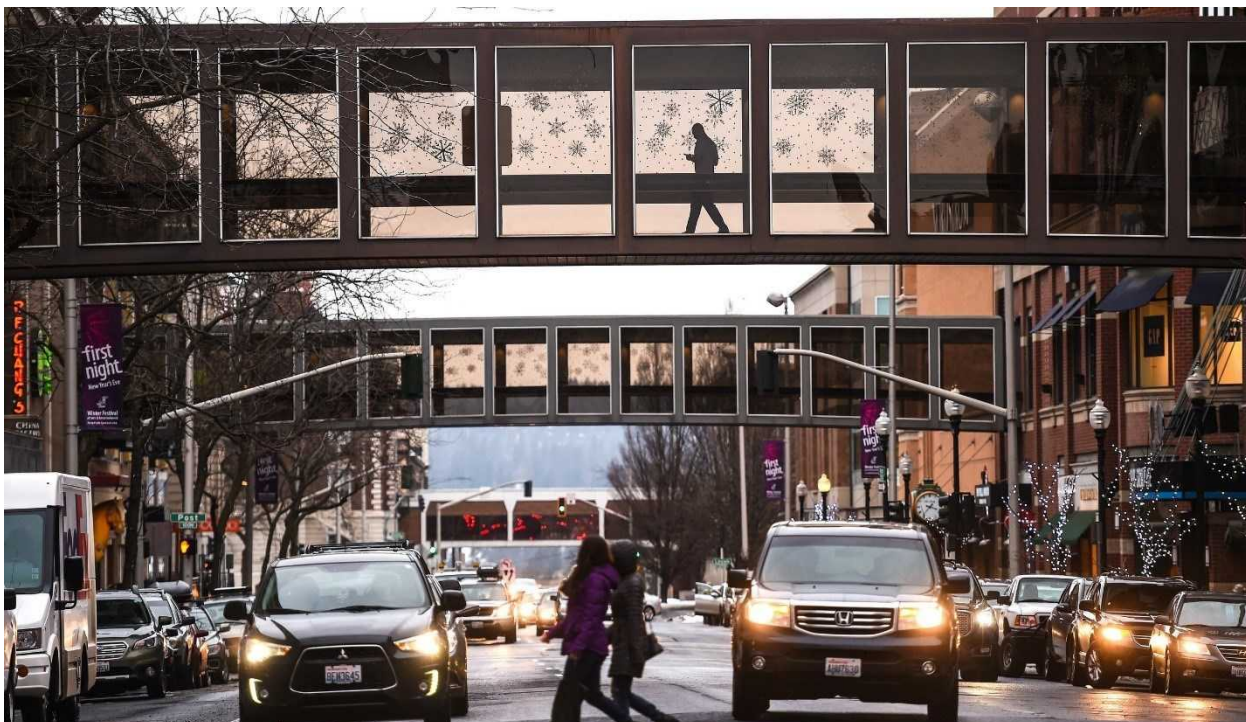
**LEASE PRICE: \$18.00/SF AVAILABLE SF: 6,000 SF 2ND FLOOR: 3,000 SF 3RD FLOOR: 3,000 SF \*All SF to be verified AMENITIES: • Close to all CBD services • Riverfront Park • Across the street from Parkade parking garage and other surface lots. Traffic Count 13,000 ADT**



## Downtown skywalk system



MOLLY QUINN/THE SPOKESMAN-REVIEW





**wilson**